

1 Shared competence profiles



iXperium's network works with competence profiles (based on research) for pupils, students, teachers, supervisors and supporting staff. These provide a universal language

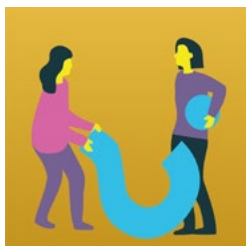
and framework for goals, activities, training and professional development.

2 Monitoring progress



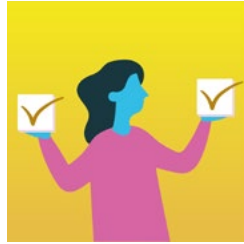
iXperium periodically monitors competence development of education professionals within the network. Additionally, we monitor pupils' and students' digital literacy. The resulting data provide a factual basis for practical competence development and evidence-informed interventions.

3 Identifying and phrasing questions



iXperium offers partners a variety of interventions, techniques and support with the purpose of identifying research and development questions regarding digitalisation within their organisation. A second goal is to help those within the organisation structure their question phrasing process. These questions may concern queries around (professional) development and knowledge at an individual, team and organisational level.

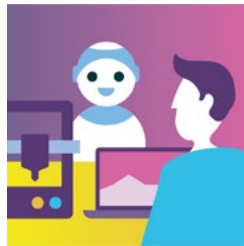
4 Professional development



iXperium provides theoretical frameworks and practical interventions for effective professional development. Secondly, we provide support for implementation, for example through the

train-the-trainer principle. Our starting point is that partners collaborate and organise implementation themselves.

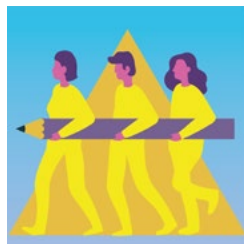
5 iXperium Labs



iXperium partners ideally have their own physical location: an iXperium lab. This is an inspiring space where support is provided and teachers, managers, supporting staff, ICT

experts, students and researchers meet, collaborate, experiment and develop new practices with innovative ICT tools at their disposal.

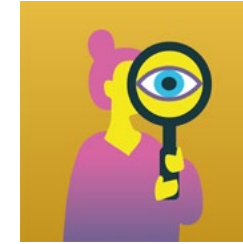
6 Evidence-informed design and implementation



Teachers collaborate in iXperium design teams (iXperium data teams or iXperium implementation teams) with experts and researchers to design and implement research-based

innovative learning arrangements with and about ICT that apply to their own questions and ambitions.

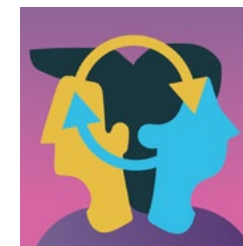
7 Research



The research group *Teaching & Learning with ICT*, in collaboration with other research partners within and outside the network, carries out broadening and in-depth

research in order to secure and continuously develop knowledge within the network.

8 Sharing knowledge and building a community



Learning from and with each other is central to the iXperium network. Researchers, specialists, employees and partner supervisors form a community that actively

collaborates and shares knowledge. iXperium collects questions, experiences and knowledge and connects people through online and physical community events. All products and knowledge are shared openly through the iXperium website.

To summarise, iXperium unifies research, teacher education and educational practice and enables future teachers, working teachers, teacher educators and supervisors to teach our pupils and students in a way that is future-oriented with its focus on ICT and our digital society, with an evidence-informed approach.